



CHIPPENHAM

**Borough Lands**

SUPPORTING THE COMMUNITY SINCE 1554

# A journey of expansion avoiding development pitfalls

Chippenham Borough Lands Charity | Jubilee Building | 32 Market Place | Chippenham | Wiltshire | SN15 3HP  
T: 01249 658180 | E: [admin@clbc.org.uk](mailto:admin@clbc.org.uk) | [www.clbc.org.uk](http://www.clbc.org.uk)

© Chippenham Borough Lands Charity

# Phil Tansley – CEO



# 6 Staff and 12 in our Board of Trustees



## 6 Staff

Administration Officer  
Caretaker  
CEO  
Communication Officer  
Education & Arts Officer  
Welfare Officer

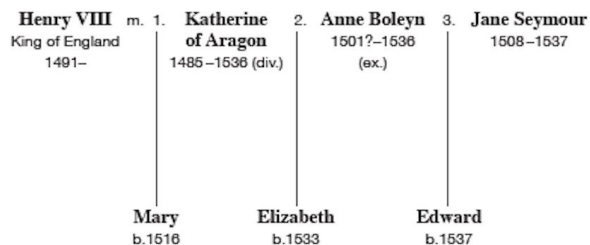
# 1554



CHIPPENHAM  
**Borough Lands**  
SUPPORTING THE COMMUNITY SINCE 1554



## ENGLAND HOUSE OF TUDOR



The Charter of Queen Mary is dated May 2nd, 1554; it runs thus —

On petition of the inhabitants of the Town and Borough of Chippenham for the better government thereof, and for the advantage of being incorporated into one body politic, the Queen decrees that the said Town and Borough shall be a free Borough for ever, of one Bailiff and Twelve Burgesses to form one body corporate: that they may plead and be impleaded, shall have a Common Seal, and may acquire lands; and the Borough shall extend from Brymland Lands, on the west, to the Yate post of Huntingdon Lands on the east; and from the midst of the Bridge of Chippenham on

# What do we do?

- We are a grant-giving charity whose origins can be traced back over 500 years.
- We are a place based charity with the aim of helping the people of Chippenham.
- We support local individuals and organisations in welfare, education, arts and community projects.
- We have investments that generate a budget for us to use for the benefit of Chippenham's inhabitants.
- We also rent out our properties and hire out rooms.
- The Borough Lands now consist of over 70 acres of land, in the centre of Chippenham, which we maintain for community use.

# The Borough Lands



CHIPPENHAM

**Borough Lands**

SUPPORTING THE COMMUNITY SINCE 1554



# A 70-acre country park with grassland, woodland and river habitats...





CHIPPENHAM  
**Borough Lands**  
SUPPORTING THE COMMUNITY SINCE 1554

in Chippenham, Wiltshire.







# The hub...



[www.westmeadhub.org.au](http://www.westmeadhub.org.au)

# Activity zone



## New Climbing Centre & Skate Park for Chippenham

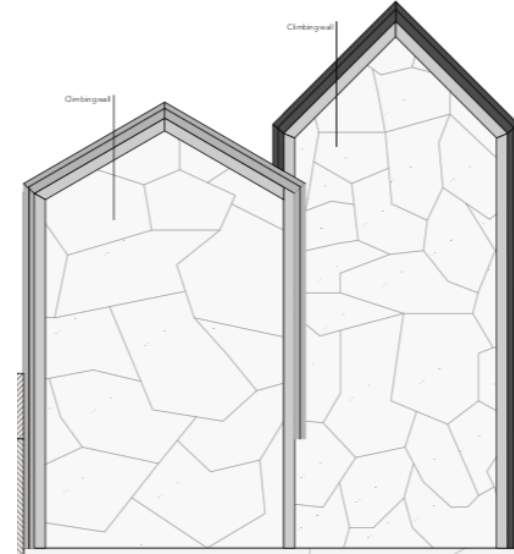
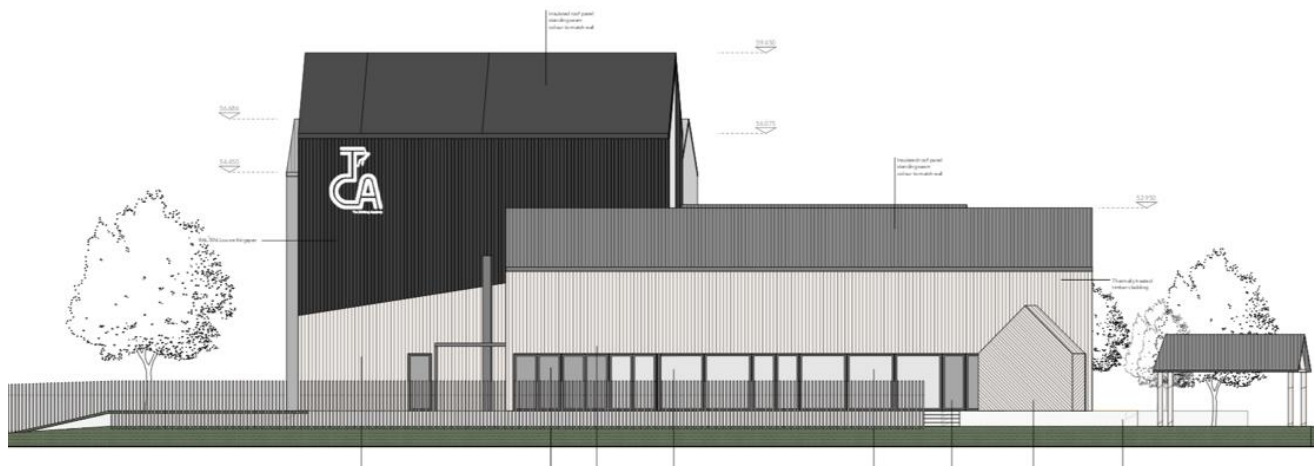
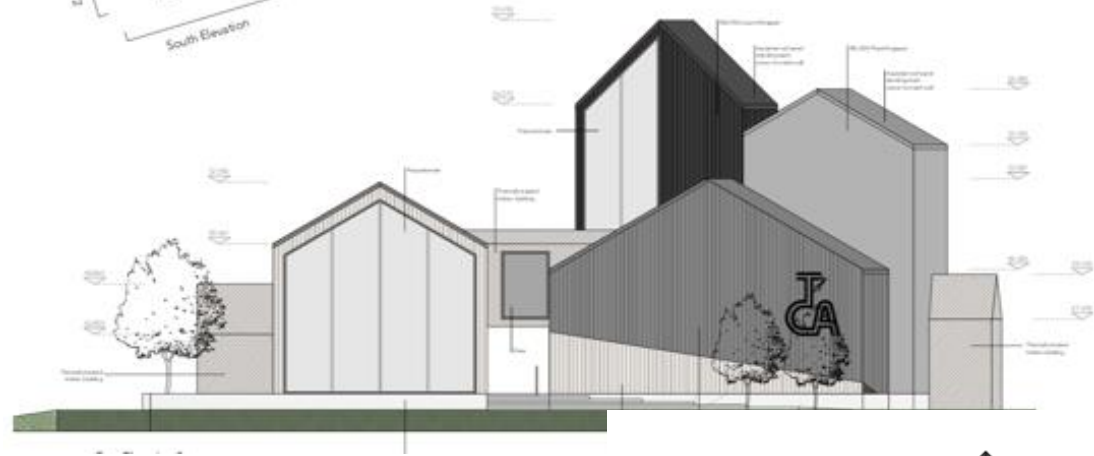
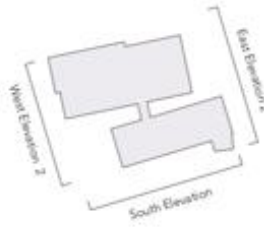




# Time & Budget Management



# England's first purpose built indoor climbing and bouldering centre...







Planning application submitted for

## NEW CLIMBING CENTRE & SKATE PARK FOR CHIPPENHAM - YOUR HELP NEEDED!

Did you know that the Chippenham Borough Lands Charity is planning to build a world class, purpose built climbing centre and skate park right here in Chippenham?

The Town Council has our full Planning application and will be discussing it on the 3rd of January 2019. We need your help to show your support for the plans! Please spread the word and comment on the planning consultation <http://bit.ly/2Afoq1x>

Designed for beginners and experts alike, and for all abilities, this is a unique opportunity to provide our children, grandchildren, families, friends and ourselves with a great resource and help put Chippenham firmly on the map! We have taken great care to address the local issues of noise, flooding and behaviour to ensure the success of the project.

Look at the plans, visit our website - [www.cblic.org.uk](http://www.cblic.org.uk) &/or find us on Facebook or Twitter for links and more information - Thank you, Chippenham Borough Lands Charity.

Comments by Thursday 10th Jan 2019

**#Chippenhammakeyourvoiceheard**

**#Chippenham**  
**makeyourvoiceheard**

Skate Park      Climbing centre  
WESTMEAD RECREATION GROUND

## NEW CLIMBING CENTRE & SKATE PARK FOR CHIPPENHAM

**#Chippenhammakeyourvoiceheard**

Skate Park      Climbing centre  
WESTMEAD RECREATION GROUND

# New Climbing Centre

**#Chippenhamhaveyoursay**

# New Skate Park for Chippenham

**#Chippenhammakeyourvoiceheard**







# Final thoughts...

- Think big and then reduce
- Get out of your office and communicate
- Pick your teams carefully



# Would you consider a development?

1. Yes

2. No



# Your turn!

1. How many of you here today have thought about development to further your charity's needs?
2. If not, what would be the major thing that would stop you?
  - A) Cost
  - B) Time
  - C) Skills
3. If there was a one stop place that charities could get information about development would you consider looking?



CHIPPENHAM

**Borough Lands**

SUPPORTING THE COMMUNITY SINCE 1554

Any questions?

Phil@cblc.org.uk

[www.cblc.org.uk](http://www.cblc.org.uk)